

m o o o i

## Love Sofa

MARCEL WANDERS



Have you ever fallen in love with a chair or a sofa? Both experiences are possible, even probable, while enjoying a romantic dinner for two in the Love chair. Or cuddling up with your sweetheart in one of the Love sofas by Marcel Wanders studio.

---

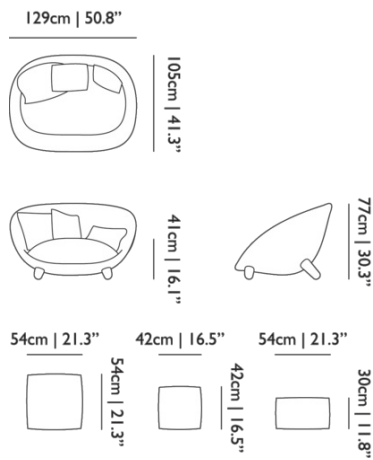
### *Detailing*



True love is long-lasting: so too is the Love Sofa's construction, with a steel frame and wood legs that provide firm support.

# Love Sofa / Sofa

## Dimensions



## Product

**WIDTH** 129cm | 50.8"

**HEIGHT** 77cm | 30.3"

**DEPTH** 105cm | 41.3"

## Packaging

**WIDTH** 118cm | 46.5"

**HEIGHT** 83cm | 32.7"

**CUBAGE** 1.34m<sup>3</sup> | 47.38ft<sup>3</sup>

**LENGTH** 137cm | 53.9"

**WEIGHT** 61kg | 134.48lbs

## Technical

### ADDITIONAL

Legs available in different stain colours: Cinnamon Stained, White Wash Stained.

### MATERIAL

Moulded foam on metal frame with wooden legs.

### HEIGHT ARMREST

69cm | 27.2"

### HEIGHT ARMREST 2

47cm | 18.5"

### SEAT DEPTH

74cm | 29.1"

### SEAT DEPTH 2

64cm | 25.2"

### SEAT HEIGHT

38cm | 15"

### SEAT HEIGHT 2

30cm | 11.8"

### SEAT WIDTH

100cm | 39.4"

### SEAT WIDTH 2

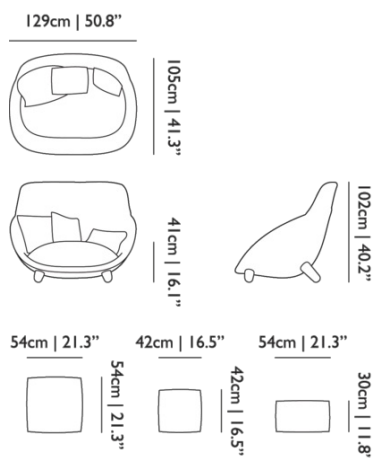
84cm | 33.1"

### SEATING CAPACITY

2

# Love Sofa / Highback

## Dimensions



## Product

**WIDTH** 129cm | 50.8"  
**HEIGHT** 102cm | 40.2"  
**DEPTH** 105cm | 41.3"

## Packaging

**WIDTH** 118cm | 46.5"  
**HEIGHT** 110cm | 43.3"  
**CUBAGE** 1.78m<sup>3</sup> | 62.8ft<sup>3</sup>  
**LENGTH** 137cm | 53.9"  
**WEIGHT** 62.5kg | 137.79lbs

## Technical

### ADDITIONAL

Legs available in different stain colours: Cinnamon Stained, White Wash Stained.

### MATERIAL

Moulded foam on metal frame with wooden legs.

### HEIGHT ARMREST

69cm | 27.2"

### HEIGHT ARMREST 2

47cm | 18.5"

### SEAT DEPTH

74cm | 29.1"

### SEAT DEPTH 2

64cm | 25.2"

### SEAT HEIGHT

38cm | 15"

### SEAT HEIGHT 2

30cm | 11.8"

### SEAT WIDTH

100cm | 39.4"

### SEAT WIDTH 2

84cm | 33.1"

### SEATING CAPACITY

2

## Upholstery

*ABBRACCI (available in 5 colours)*



**COMPOSITION**  
100% PES

**ABRASION**  
30000 martindale  
lightfastness 3 - 4  
pilling 5

**FIRE RESISTANCE**  
BS 5852 - Ignition source  
0 (Cigarette)  
BS 5852 - Ignition source  
1 (Match flame equivalent)  
EN 1021-1 (Cigarette)  
EN 1021-2 (Match)  
TB 117-2013

---

*BOUCLE (available in 4 colours)*



**COMPOSITION**  
43% CO, 14% PA, 12% CV,  
3% PES, 28% PAN

**ABRASION**  
20000 martindale  
lightfastness 4 - 6  
pilling 4 - 5

**FIRE RESISTANCE**  
EN 1021-1 (Cigarette)  
EN 1021-2 (Match)

---

*CANVAS 2 (available in 45 colours)*

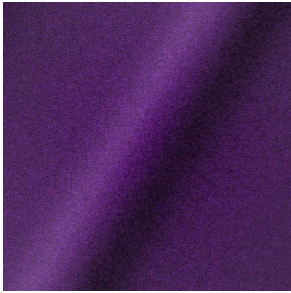


**COMPOSITION**  
90% WO, 10% PA

**ABRASION**  
100000 martindale  
lightfastness 6  
pilling 4

**FIRE RESISTANCE**  
BS 5852 - Ignition source  
1 (Match flame equivalent)  
BS 5852 - Ignition source  
0 (Cigarette)  
TB 117-2013  
EU Ecolabel

*DIVINA 3 (available in 56 colours)*



**COMPOSITION**  
100% WO

**ABRASION**  
45000 martindale  
lightfastness 7  
pilling 3

**FIRE RESISTANCE**  
BS 5852 - Ignition source  
0 (Cigarette)  
BS 5852 - Ignition source  
5 (Crib 5)  
BS 5852 - Ignition source  
1 (Match flame equivalent)  
EN 1021-1 (Cigarette)  
EN 1021-2 (Match)  
TB 117-2013  
EU Ecolabel

---

*DIVINA MD (available in 27 colours)*



**COMPOSITION**  
100% WO

**ABRASION**  
45000 martindale  
lightfastness 6  
pilling 3

**FIRE RESISTANCE**  
BS 5852 - Ignition source  
0 (Cigarette)  
BS 5852 - Ignition source  
5 (Crib 5)  
BS 5852 - Ignition source  
1 (Match flame equivalent)  
EN 1021-1 (Cigarette)  
EN 1021-2 (Match)  
EU Ecolabel

---

*DIVINA MELANGE 3 (available in 49 colours)*

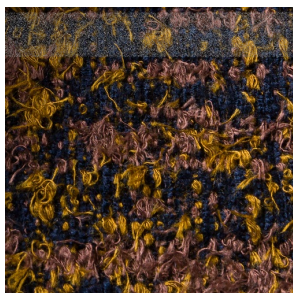


**COMPOSITION**  
100% WO

**ABRASION**  
45000 martindale  
lightfastness 6 - 7  
pilling 3

**FIRE RESISTANCE**  
BS 5852 - Ignition source  
0 (Cigarette)  
BS 5852 - Ignition source  
5 (Crib 5)  
BS 5852 - Ignition source  
1 (Match flame equivalent)  
EN 1021-1 (Cigarette)  
EN 1021-2 (Match)  
TB 117-2013  
EU Ecolabel

*Bearded Leopard (available in 3 colours)*



**COMPOSITION**

77% CV, 15% PES, 7% CO,  
1% PA

**ABRASION**

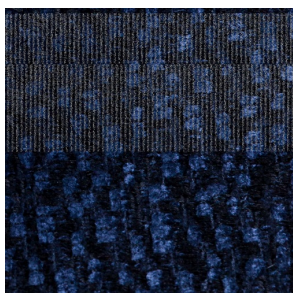
15000 martindale  
lightfastness 4 - 6  
pilling 4

---

*Bison (available in 1 colours)*



*Calligraphy Bird (available in 4 colours)*



**COMPOSITION**

64% CV, 21% PES, 15%  
CO

**ABRASION**

50000 martindale  
lightfastness 4 - 6  
pilling 5

---

*Dodo Pavone (available in 3 colours)*



**COMPOSITION**

12% CO, 88% PES

**ABRASION**

40000 martindale  
lightfastness 5  
pilling 4 - 5

---

*Memento Moooi Medley (available in 1 colours)*



**COMPOSITION**

100% PES

**ABRASION**

50000 martindale  
lightfastness 4 - 6  
pilling 5

**FIRE RESISTANCE**

EN 1021-1 (Cigarette)  
EN 1021-2 (Match)  
TB 117-2013

---

*Menagerie of Extinct Animals (available in 2 colours)*



**COMPOSITION**

100% PES

**ABRASION**

50000 martindale  
lightfastness 4 - 6  
pilling 5

**FIRE RESISTANCE**

EN 1021-1 (Cigarette)  
EN 1021-2 (Match)  
TB 117-2013

---

*Rendezvous Tokyo Blue (available in 1 colours)*



**COMPOSITION**

100% PES

**ABRASION**

50000 martindale  
lightfastness 4 - 6  
pilling 5

---

*Blushing Sloth Melange Mohair (available in 1 colours)*



**COMPOSITION**

85% WV, 15% WM

**ABRASION**

15000 martindale  
lightfastness 4 - 6  
pilling 2 - 3

---

*Blushing Sloth Woolly Mohair (available in 1 colours)*



**COMPOSITION**

24% PES, 15% PA, 8% CO,  
24% WM, 29% WV

**ABRASION**

40000 martindale  
lightfastness 4 - 6  
pilling 3 - 4

---

*FIORD (available in 39 colours)*



**COMPOSITION**

92% WV, 8% PA

**ABRASION**

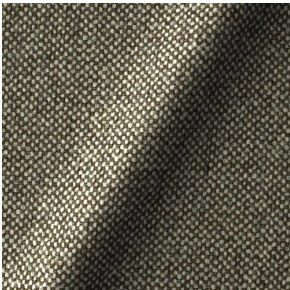
60000 martindale  
lightfastness 6  
pilling 4 - 5

**FIRE RESISTANCE**

EN 1021-1 (Cigarette)  
EN 1021-2 (Match)  
BS 5852 - Ignition source  
0 (Cigarette)  
BS 5852 - Ignition source  
1 (Match flame equivalent)

---

*HALLINGDAL 65 (available in 58 colours)*



**COMPOSITION**

30% CV, 70% WV

**ABRASION**

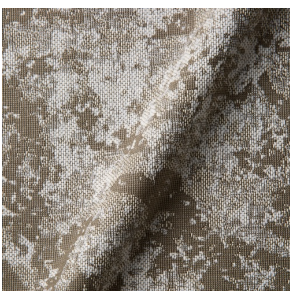
100000 martindale  
lightfastness 7  
pilling 3 - 4

**FIRE RESISTANCE**

BS 5852 - Ignition source  
0 (Cigarette)  
BS 5852 - Ignition source  
5 (Crib 5)  
BS 5852 - Ignition source  
1 (Match flame equivalent)  
EN 1021-1 (Cigarette)  
EN 1021-2 (Match)  
TB 117-2013  
EU Ecolabel

---

*JACQUARD, FRESC (available in 1 colours)*



**COMPOSITION**

52% CV, 38% CO, 10% LI

**ABRASION**

15000 martindale  
lightfastness 3 - 4  
pilling 2 - 3

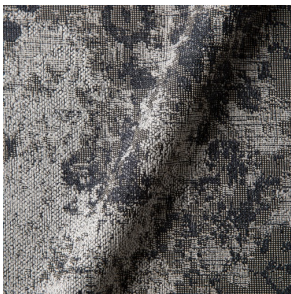
**FIRE RESISTANCE**

BS 5852 - Ignition source  
0 (Cigarette)  
EN 1021-1 (Cigarette)  
EN 1021-2 (Match)



---

*JACQUARD, OLD (available in 2 colours)*



**COMPOSITION**

52% CV, 38% CO, 10% LI

**ABRASION**

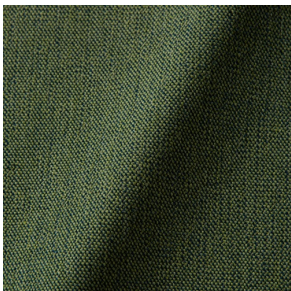
15000 martindale  
lightfastness 3 - 4  
pilling 2 - 3

**FIRE RESISTANCE**

BS 5852 - Ignition source  
0 (Cigarette)  
EN 1021-1 (Cigarette)  
EN 1021-2 (Match)

---

*JUSTO (available in 10 colours)*



**COMPOSITION**

15% CO, 35% PC, 10% PA,  
40% CV

**ABRASION**

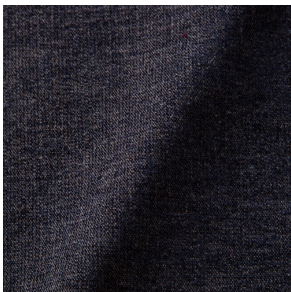
50000 martindale  
lightfastness 5  
pilling 4

**FIRE RESISTANCE**

EN 1021-1 (Cigarette)  
EN 1021-2 (Match)  
TB 117-2013

---

*LISCIO (available in 11 colours)*



**COMPOSITION**

35% WO, 35% CV, 21%  
CO, 9% PA

**ABRASION**

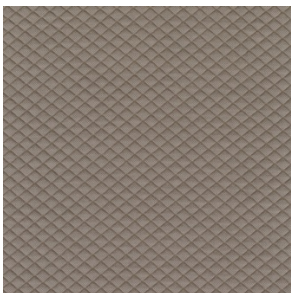
30000 martindale  
lightfastness 4 - 6  
pilling 4

**FIRE RESISTANCE**

TB 117-2013

---

*MOSAIC 2 (available in 15 colours)*



**COMPOSITION**

58% PES, 27% WV, 9% PA,  
6% EA

**ABRASION**

100000 martindale  
lightfastness 6 - 7  
pilling 4 - 5

*PALETTE (available in 24 colours)*



**COMPOSITION**

42% CO, 29% WO, 29%  
TL

**ABRASION**

45000 martindale  
lightfastness 4 - 5  
pilling 3 - 3

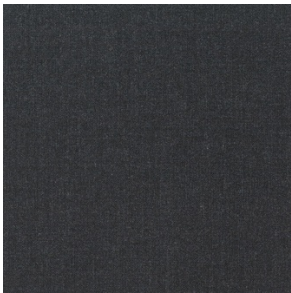
**FIRE RESISTANCE**

BS 5852 - Ignition source  
0 (Cigarette)  
TB 117-2013  
BS 5852 - Ignition source  
5 (Crib 5)

---

*PLUSH (available in 1 colours)*

*REMIX 3 (available in 53 colours)*



**COMPOSITION**

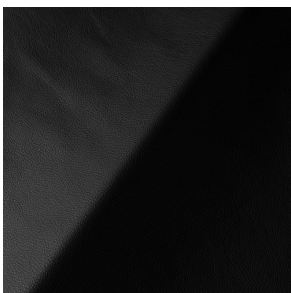
10% PA, 90% WV

**ABRASION**

100000 martindale  
lightfastness 5  
pilling 4

---

*SAVANNE (available in 3 colours)*

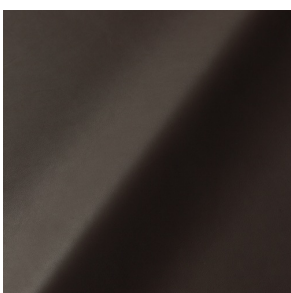


**FIRE RESISTANCE**

EN 1021-1 (Cigarette)  
EN 1021-2 (Match)  
TB 117-2013  
OEKO-TEX

---

*SHADE (available in 6 colours)*



**ABRASION**

lightfastness 3 - 4

**FIRE RESISTANCE**

EN 1021-1 (Cigarette)  
EN 1021-2 (Match)  
TB 117-2013

---

*SOLIS (available in 9 colours)*



**COMPOSITION**

60% WO, 30% PES, 2%  
PA, 3% PC

**ABRASION**

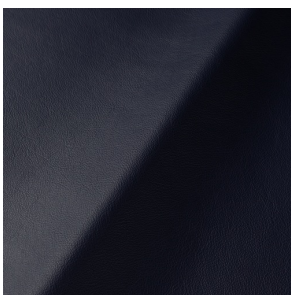
40000 martindale  
lightfastness 5  
pilling 3 - 4

**FIRE RESISTANCE**

EN 1021-1 (Cigarette)  
EN 1021-2 (Match)  
TB 117-2013

---

*SPECTRUM (available in 11 colours)*



**ABRASION**

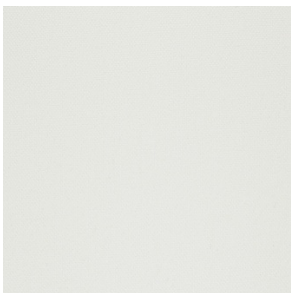
lightfastness 6 - 6

**FIRE RESISTANCE**

EN 1021-1 (Cigarette)  
EN 1021-2 (Match)  
TB 117-2013  
OEKO-TEX

---

*STEELCUT 2 (available in 37 colours)*



**COMPOSITION**

90% WV, 10% PA

**ABRASION**

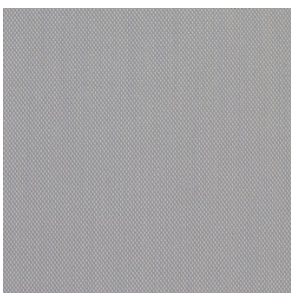
100000 martindale  
lightfastness 6  
pilling 3 - 4

**FIRE RESISTANCE**

BS 5852 - Ignition source  
0 (Cigarette)  
BS 5852 - Ignition source  
1 (Match flame equivalent)  
EN 1021-1 (Cigarette)  
EN 1021-2 (Match)  
TB 117-2013  
EU Ecolabel

---

*STEELCUT TRIO 3 (available in 54 colours)*



**COMPOSITION**

90% WV, 10% PA

**ABRASION**

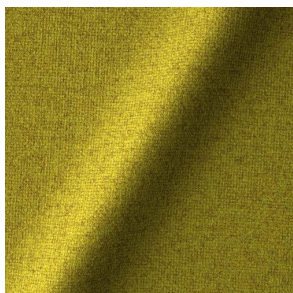
100000 martindale  
lightfastness 5  
pilling 4

**FIRE RESISTANCE**

BS 5852 - Ignition source  
0 (Cigarette)  
BS 5852 - Ignition source  
1 (Match flame equivalent)  
EN 1021-1 (Cigarette)  
EN 1021-2 (Match)  
EU Ecolabel

---

*TONICA 2 (available in 39 colours)*



**COMPOSITION**

100% WV

**ABRASION**

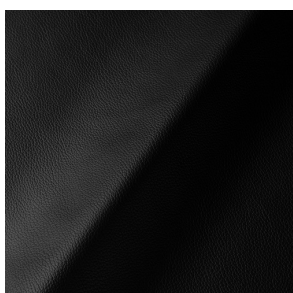
45000 martindale  
lightfastness 6 - 7  
pilling 4 - 5

**FIRE RESISTANCE**

EN 1021-1 (Cigarette)  
EN 1021-2 (Match)

---

*ULTRA (available in 6 colours)*



**ABRASION**

lightfastness 6 - 7

**FIRE RESISTANCE**

EN 1021-1 (Cigarette)  
EN 1021-2 (Match)  
TB 117-2013  
ANSI/BIFMA M7.1 (Total  
Volatile Organic  
Compounds)

---

*VESPER (available in 8 colours)*



**COMPOSITION**

10% CO, 40% LI, 10% PA,  
10% PES, 30% CV

**ABRASION**

40000 martindale  
lightfastness 5  
pilling 4

**FIRE RESISTANCE**

EN 1021-1 (Cigarette)  
EN 1021-2 (Match)  
TB 117-2013

---